



# BAGS FOR KITS

McCoy will package your kit in any number of stylish backpacks, duffels, messengers, or totes of your choice.



FIRST CLASS



### MULTIPOCKET MEDICAL BAG†\*

- Tear resistant poly shell
- Padded shoulder strap with metal hardware
- Surround foam padding
- Expandable bellows pocket
- Several accessory pockets
- 17"W x 11"H x 7"D

Item#: 30000



### OVERSIZED DELUXE BACKPACK

- Front zippered organizer pocket
- Another front zippered pocket with wire port
- Side zippered pocket and a side mesh pocket
- Multiple compression straps for stability and comfort
- 13.5"W x 20"H x 8"D

Item#: EB3045R



### LAPTOP COMPUTER BACKPACK

- Dual main compartments
- 15" laptop computer sleeve
- Two front zippered pockets
- Front mesh stash pocket
- Dual side zippered pockets
- 13"W x 17"H x 8"D

Item#: EB7045LT



### MINI BACKPACK HANDBAG†\*

- Two grab handles for easy carry and adjustable straps
- Doctor bag style opening
- Front zippered pocket
- Two side pockets
- Back zipper access to main compartment
- 8.5"W x 13"H x 6"D

Item#: EBHP1100



† = imprint available on quantities 0-71  
\* = imprint available on quantities 72+

Prices listed reflect costs added to custom kit quotes



**DELUXE DAYTIME TOTE**

- Three outside slip pockets
- Coin purse
- Zippered insulated lunch compartment
- Inside bottle holder
- Zippered main compartment
- 14"W x 16.5"H x 7"D

Item#: EB1002DLX



**CROSSOVER DUFFLE BAG†\***

- Side mesh pockets
- Zipper pockets
- 10"W x 20"H x 10"D

Item#: EB020



**GEAR BAG MEDIUM†\***

- One outside pocket
- Adjustable shoulder strap
- 24"W x 12"H x 12"D

Item#: EB1008MD



**DELUXE UTILITY BAG†\***

- Multiple zippered compartments
- Small side pouch
- Side mesh pocket
- 9"W x 11"H x 5.5"D

Item#: EB067



**TWO TONE BACKPACK WITH MESH POCKETS†\***

- Two outside compartments
- Dual mesh water bottle holders
- Key ring
- Sports straps
- 13"W x 17"H x 7"D

Item#: EB3045SH



**STANDARD SIGNATURE WAIST PACK**

- Three pockets
- Key ring
- 11.5"W x 4.5 H x 3"D

Item#: EB044KD



† = imprint available on quantities 0-71  
 \* = imprint available on quantities 72+

Prices listed reflect costs added to custom kit quotes



**STANDARD BACKPACK†\***

- Front zippered pocket
- Key ring
- Available in 21 colors
- 13"W x 16.5"H x 6.5"D

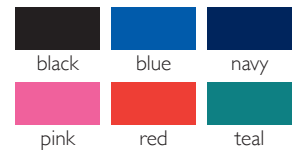
Item#: EB2045CR



**LARGE ZIPPERED SHOULDER TOTE BAG†\***

- Zippered main compartment
- 18"W x 15"H x 5.5"D

Item#: AJ613



**BACKPACK WITH FRONT AND SIDE POCKETS**

- Front mesh pocket
- Dual side mesh pockets
- 11"W x 17"H x 5"D

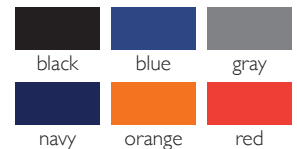
Item#: EBBP2072



**SPORT DUFFEL BAG†\***

- Front open pocket
- 2 mesh bottle holders
- Shoulder strap
- 17.5"W x 10.5"H x 9.5"D

Item#: AJ215



**MULTIPOCKET MINI BACKPACK†\***

- Bottle holder pocket
- Zippered main compartment
- Front zippered gusset pocket
- Small sized backpack
- 10"W x 13"H x 5"D

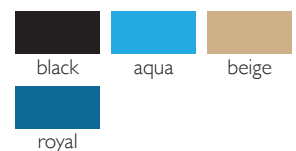
Item#: EB2045WT2



**FASHION SHOPPING TOTE†\***

- Small inner zippered pocket
- Outer flat pocket
- 16.5"W x 15"H x 5"D

Item#: EB1002DS



† = imprint available on quantities 0-71  
 \* = imprint available on quantities 72+



**COLOR PANEL ZIP-  
PERED KIT BAG†\***

- Standard McCoy kit bags
- ID badge holder
- 15.5"W x 17"H x 5.5"D

Item#: AJ891K



**DRAWSTRING CINCH  
BACKPACK†\***

- Drawstring top
- Expandable
- 15"W x 19"H x 4"D

Item#: B7151



**KIT DECORATION**

All kits will be quoted in a clear plastic bag unless a different bag option is selected for your kit. Prices listed are added to your final kit price. For custom decoration, additional information and pricing below.

**SCREEN PRINTING REQUIREMENTS:**

† = IMPRINTING 72 BAGS OR MORE:

- Add \$2.00 per color
- Set up \$80.00 per color

\* = IMPRINTING LESS THAN 72:

- Add \$3.75
- Set up \$80.00 per color
- One color only

**EMBROIDERY REQUIREMENTS:**

- For embroidery, please contact us for a quote
- 48 piece minimum
- Additional one-time fee based on number of stitches



Skills kit lead time 4-6 weeks from artwork approval and purchase order submittal. Please take the lead time into account and order as early as possible. Custom kits are non-returnable. Prices and availability are subject to change.

**McCOY HEALTH SCIENCE SUPPLY**

11559 Rock Island Court • Maryland Heights, MO 63043  
 Customer Service: 800-633-2665 Fax: 800-421-8816  
 www.mccoymedical.com • email: orders@mccoymedical.com